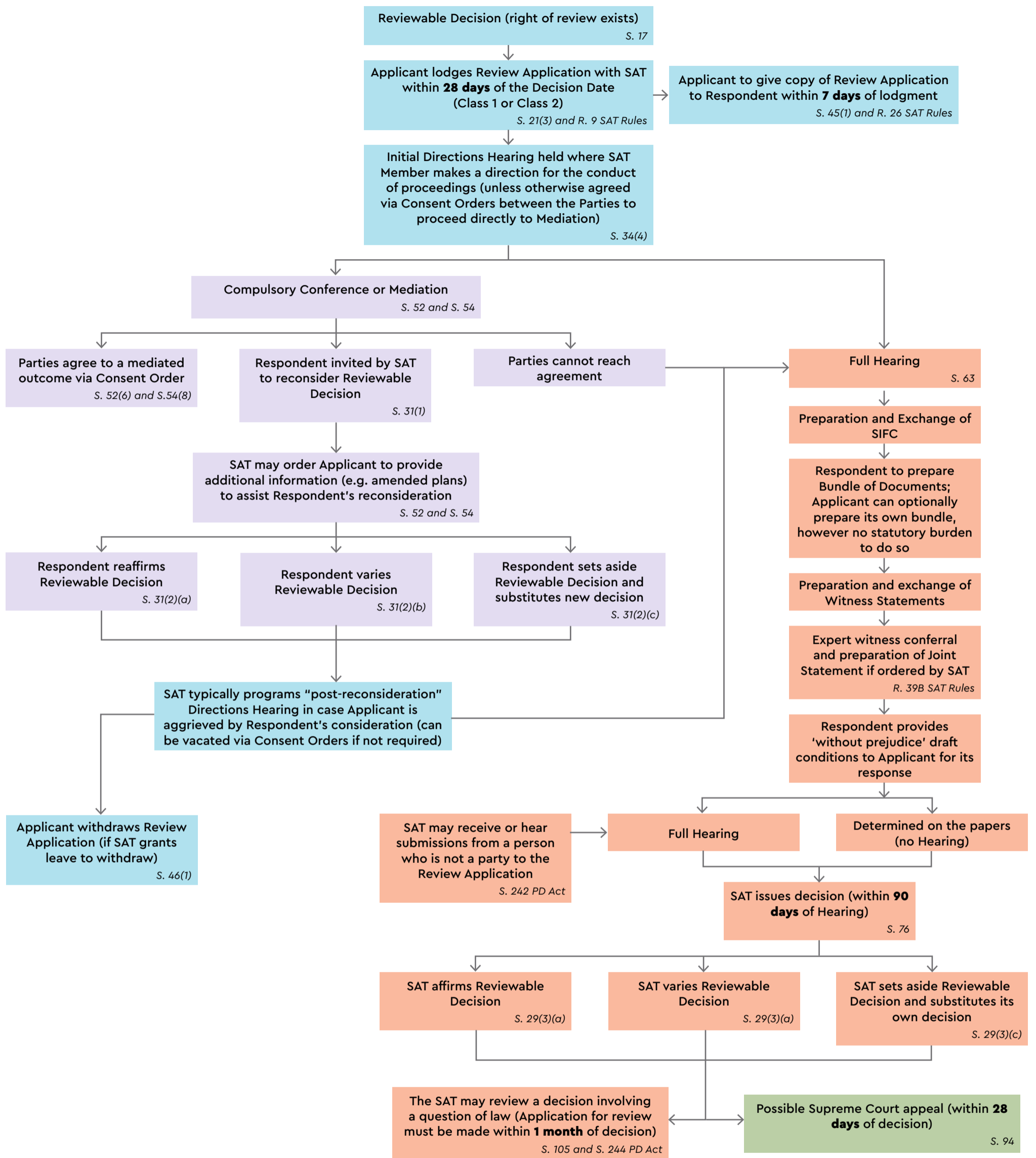


STATE ADMINISTRATIVE TRIBUNAL



LEGEND

SAT: State Administrative Tribunal
 RESPONDENT: Original Decision-Maker
 SIFC: Statement of Issues, Facts and Contentions
 PD ACT: Planning and Development Act 2005
 SAT RULES: State Administrative Tribunal Rules 2004
 CLASS 1: A Review Application made in relation to a development with a value of less than \$250, 000; or a development that is a single house with a value less than \$500, 000 on a single lot; or a subdivision of a lot into not more than 3 lots
 CLASS 2: A Review Application that is not a Class 1 application

NOTES

* Section numbers refer to the State Administrative Tribunal Act 2004 unless otherwise stated

Application / Directions

Mediation / Reconsideration

Full Hearing

Supreme Court